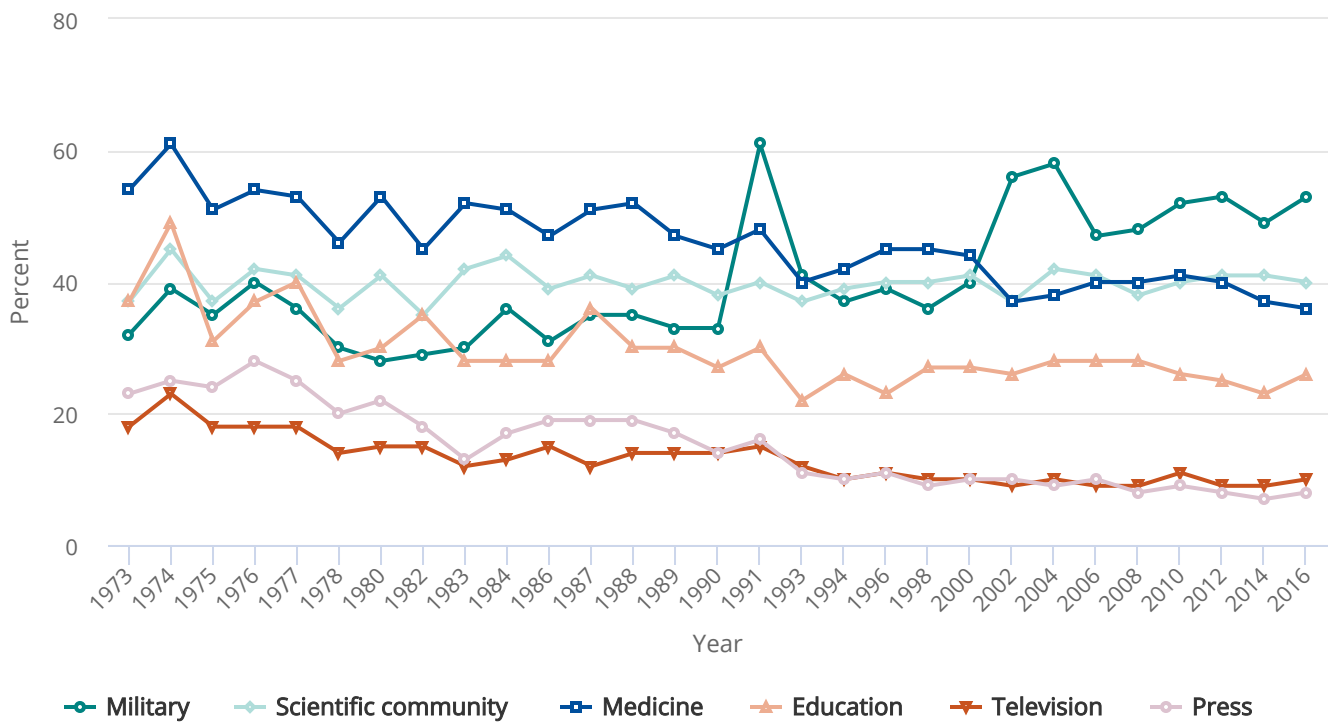


FIGURE 7-15

Public confidence in institutional leaders, by selected institution: 1973–2016



Note(s)

Responses to the following: *As far as the people running these institutions are concerned, would you say that you have a great deal of confidence, only some confidence, or hardly any confidence at all in them?* Figure shows only responses for "a great deal of confidence."

Source(s)

NORC at the University of Chicago, General Social Survey (1973–2016). See Appendix Table 7-28.

Science and Engineering Indicators 2018