



# Women, Minorities, and Persons with Disabilities in Science and Engineering

*2021 Report Briefing*

John Finamore

---

National Center for Science and Engineering Statistics

Social, Behavioral and Economic Sciences

National Science Foundation

# WMPD Background



**What:** WMPD provides statistical information about the participation of women, minorities and persons with disabilities in science and engineering education and employment

**Why:** Mandate from the Science and Engineering Equal Opportunities Act of 1980

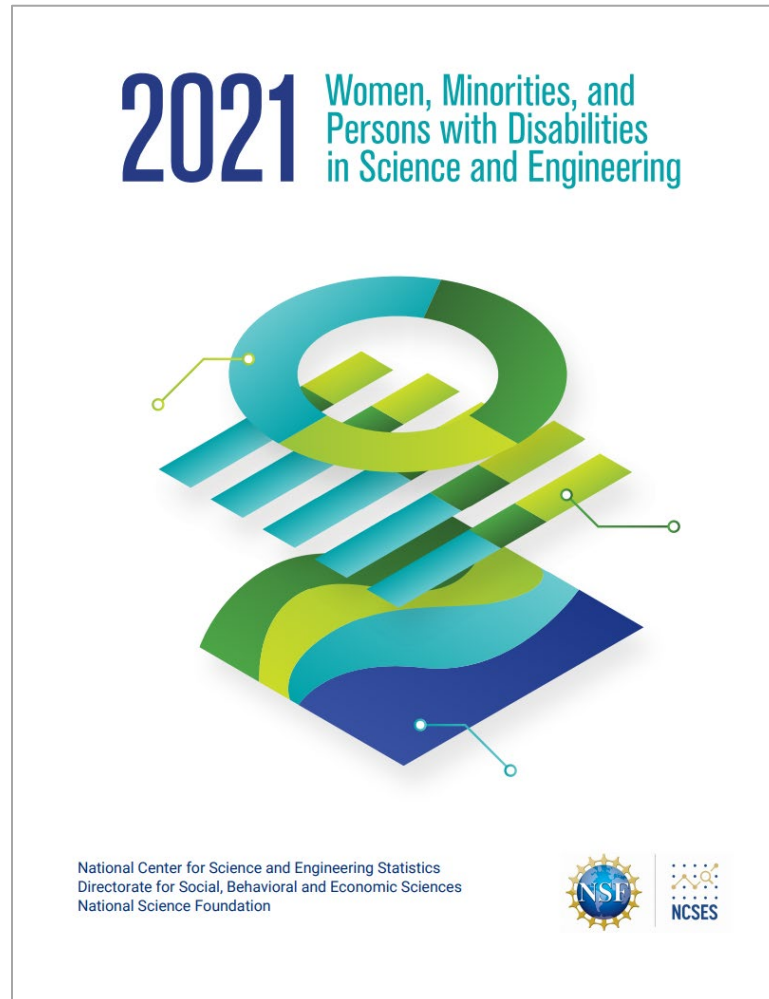
**When:** Published every two years

**How:** Key topical areas within the report include:

- Enrollment
- Field of degree
- Employment status
- Occupation
- Disability status

# 2021 WMPD Report Briefing

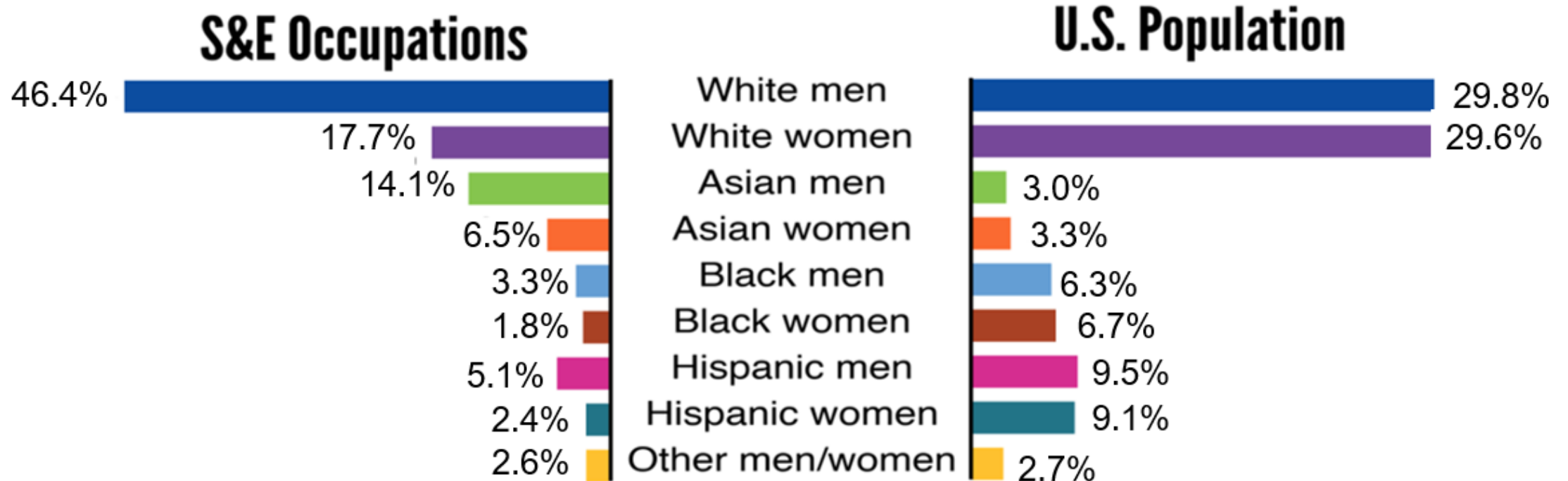
---



## Defining Underrepresentation

# What does 'underrepresentation' mean?

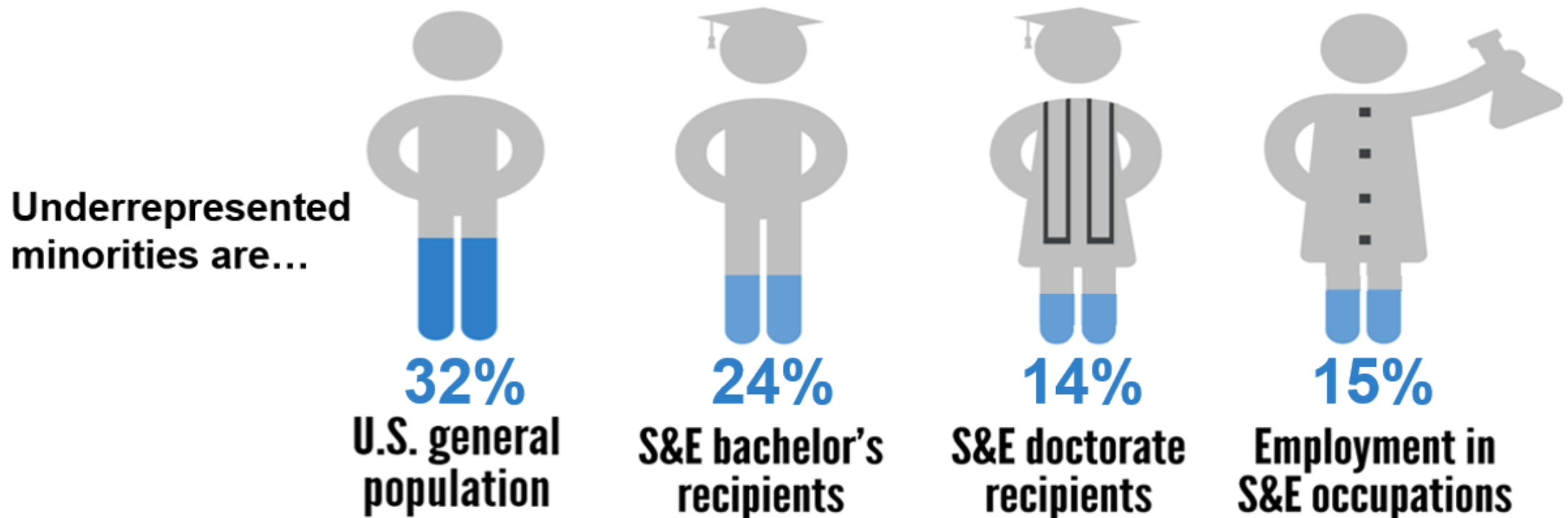
Some groups have disproportionately low representation in science and engineering compared to the U.S. population.



Sources: 2019 National Survey of College Graduates (left), 2019 American Community Survey (right)

# Levels of Underrepresentation – Minorities

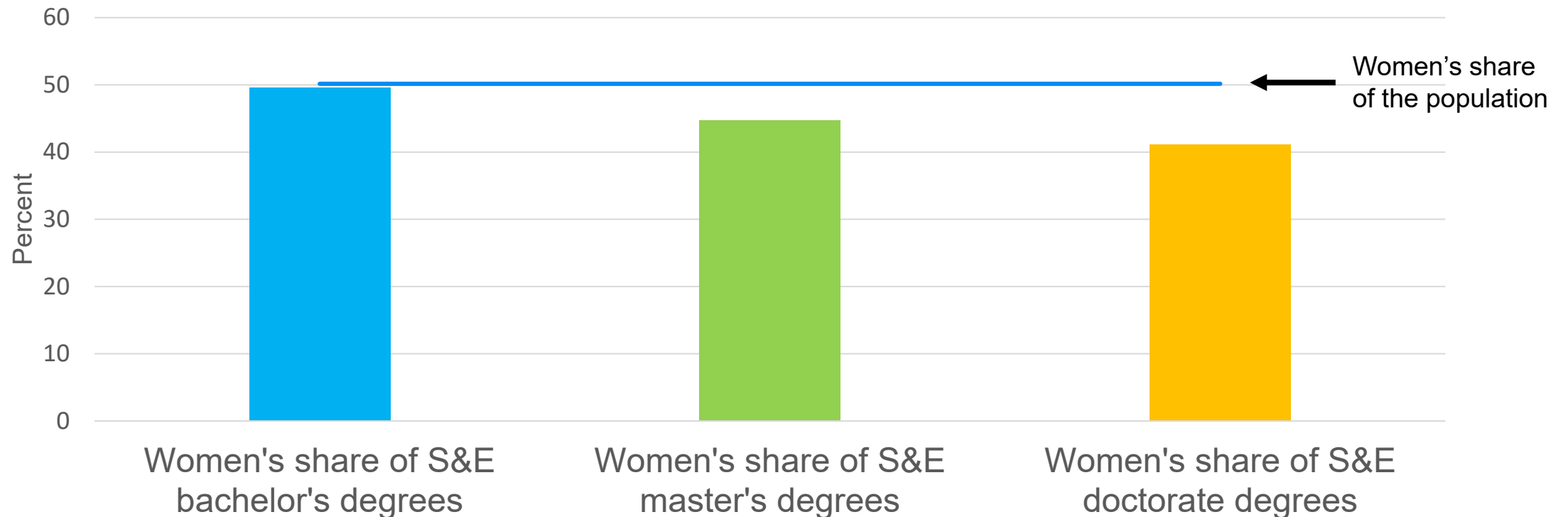
Combined, Blacks, Hispanics, and Native Americans or Alaska Natives account for roughly 32% of the U.S. population. That share is lower at various levels of S&E.



Sources: 2019 American Community Survey (population); National Center for Education Statistics degree completion data (bachelor's and doctorate recipients); 2019 National Survey of College Graduates (employment)

# Levels of Underrepresentation – Women

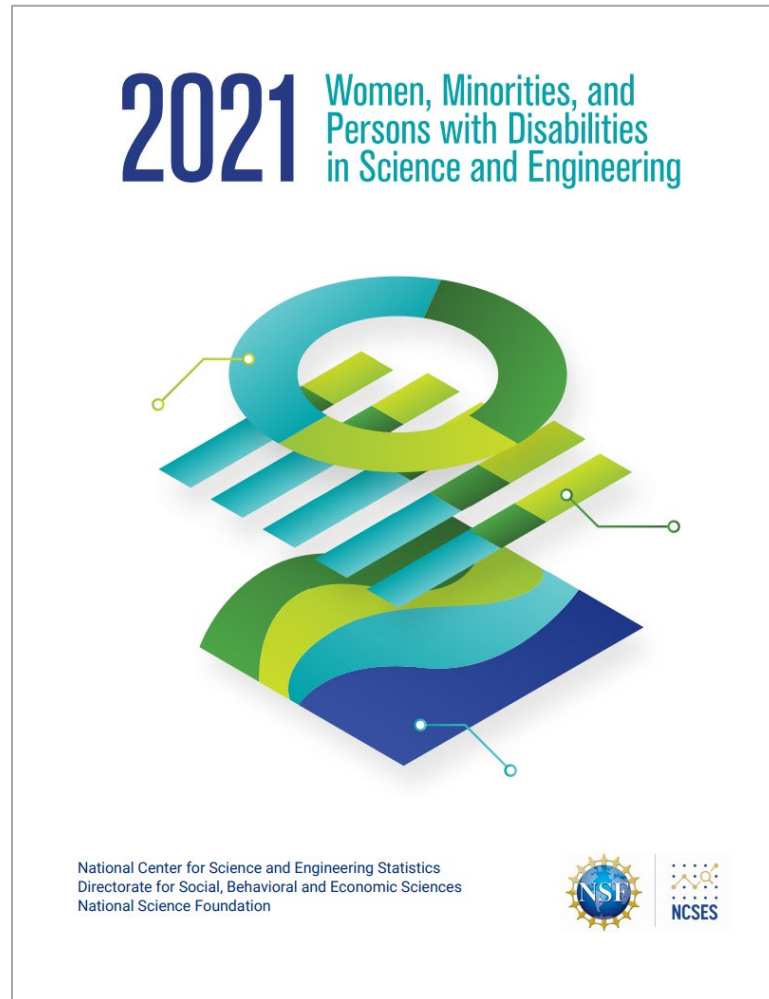
Women account for roughly 50% of the U.S. population. That share is lower at the different S&E degree levels.



Sources: National Center for Education Statistics degree completion data

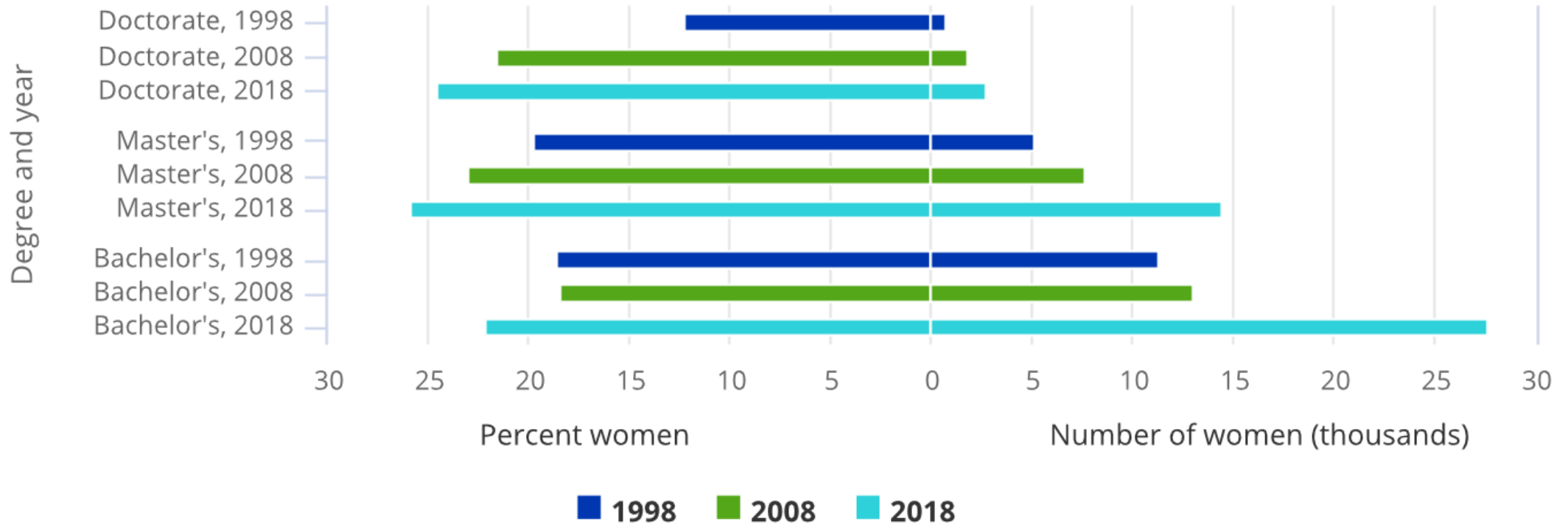
# 2021 WMPD Report Briefing: Education

---



## Enrollment, Completions, and Field of Degree

# Both the number and share of women receiving engineering degrees increased at all levels over the past two decades



Degrees awarded to women: Engineering, 1998, 2008, 2019.

Data source: Department of Education, National Center for Education Statistics, Integrated Postsecondary Education Data System, Completions Survey.



# Enrollment, Completions, and Field of Degree

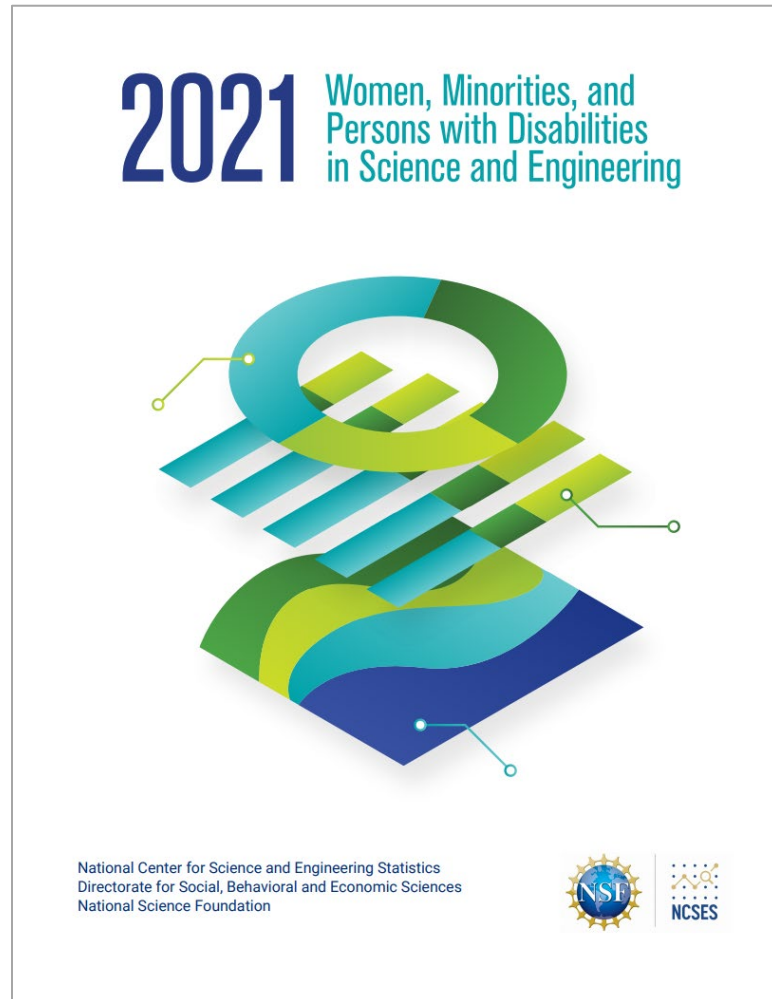


Other topics within the report include:

- Undergraduate enrollment
- Graduate enrollment
- Institution type
- Primary source of support
- Field of degree – women
- Field of degree – minorities
- Baccalaureate origin of minority doctorate recipients
- Persons with disability
- Intersectionality

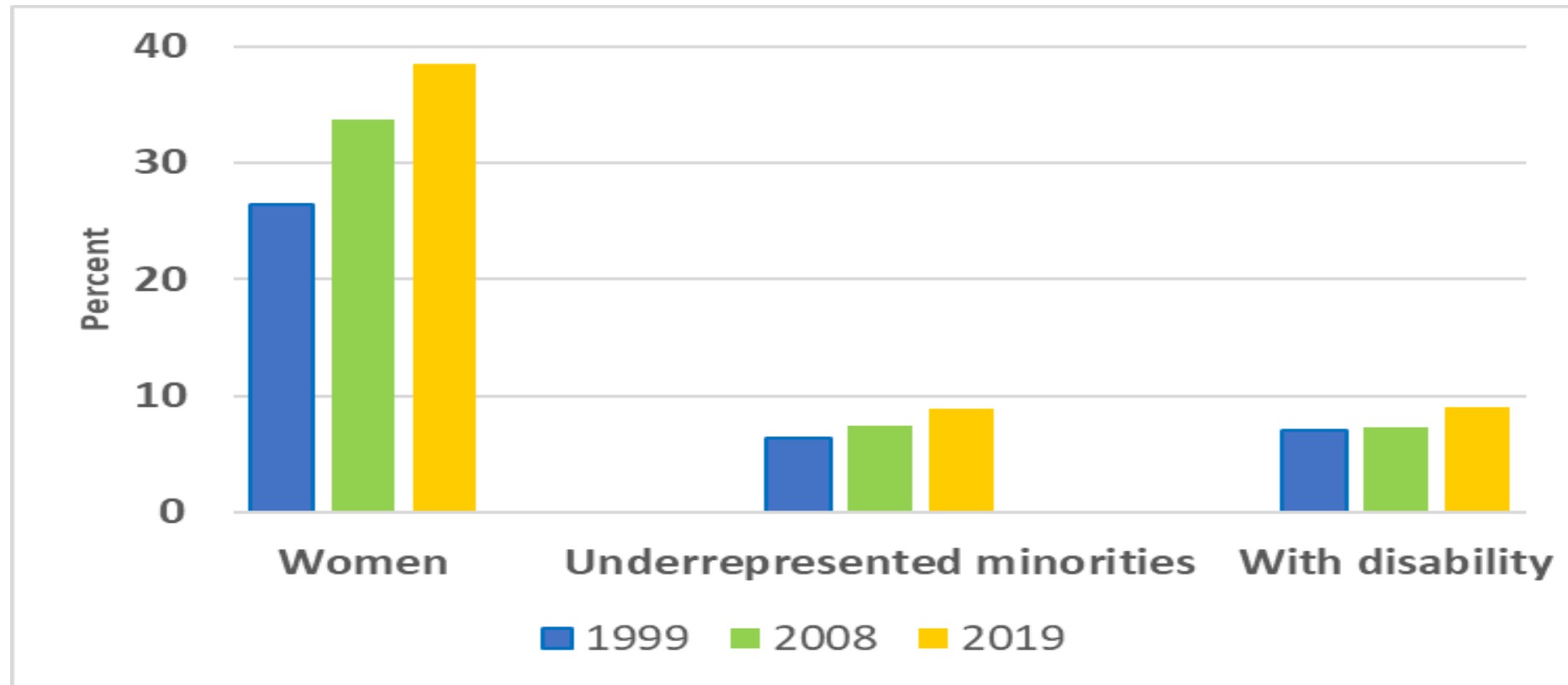
# 2021 WMPD Report Briefing: Workforce

---



## Employment Status and Occupations

# The share of women, underrepresented minorities, those with disability in academic doctoral workforce increased 1999-2019



Women, underrepresented minorities, and those with disability as a percentage of the academic doctoral workforce: 1999, 2008, 2019

Data source: National Center for Science and Engineering Statistics, Survey of Doctorate Recipients.

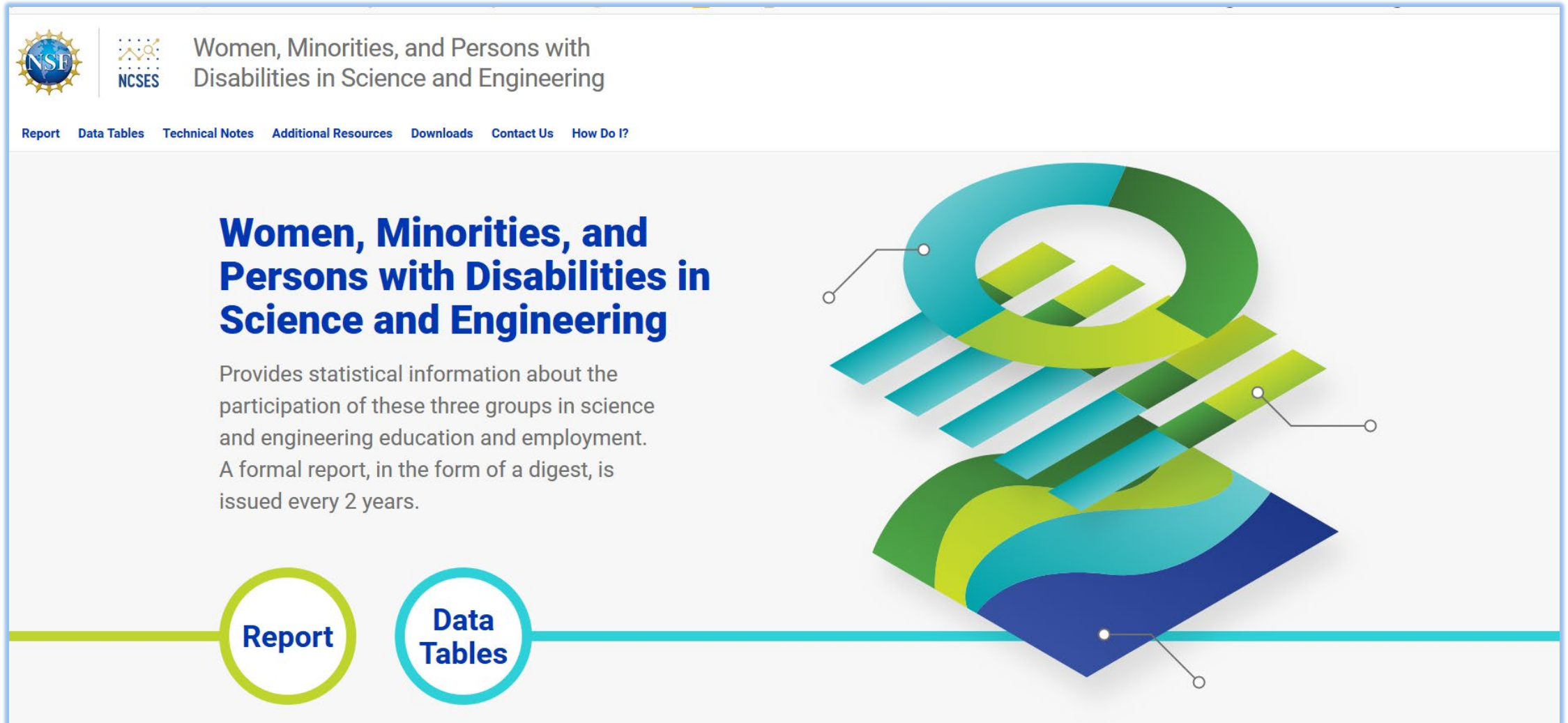
# Employment Status and Occupation



Other topics within the report include:

- Employment status
- Part-time employment status
- Reasons for working part-time
- Reasons for unemployment
- Persons with disability
- Salary
- Supervisory status
- Skilled technical workforce
- Academic careers

# WMPD Website – [nces.nsf.gov/wmpd](https://nces.nsf.gov/wmpd)



The screenshot shows the homepage of the WMPD website. At the top left are the NSF and NCSSES logos. The main title is "Women, Minorities, and Persons with Disabilities in Science and Engineering". Below this is a navigation menu with links for "Report", "Data Tables", "Technical Notes", "Additional Resources", "Downloads", "Contact Us", and "How Do I?". The main content area features a large blue heading, a descriptive paragraph, and two circular buttons for "Report" and "Data Tables". On the right side, there is a large, colorful, abstract graphic consisting of overlapping rings and bands in shades of blue, green, and yellow, with small white circles and lines pointing to various parts of the design.

**NSF** | **NCSSES** | Women, Minorities, and Persons with Disabilities in Science and Engineering

[Report](#) [Data Tables](#) [Technical Notes](#) [Additional Resources](#) [Downloads](#) [Contact Us](#) [How Do I?](#)

## Women, Minorities, and Persons with Disabilities in Science and Engineering

Provides statistical information about the participation of these three groups in science and engineering education and employment. A formal report, in the form of a digest, is issued every 2 years.

**Report** **Data Tables**

# Contact Information



John Finamore (jfinamor@nsf.gov)