

# COVID-19 Impacts on the U.S. Antarctic Program



Dr. William Easterling,  
Assistant Director,  
Directorate for Geosciences

Ms. Stephanie Short,  
Antarctic Infrastructure & Logistics

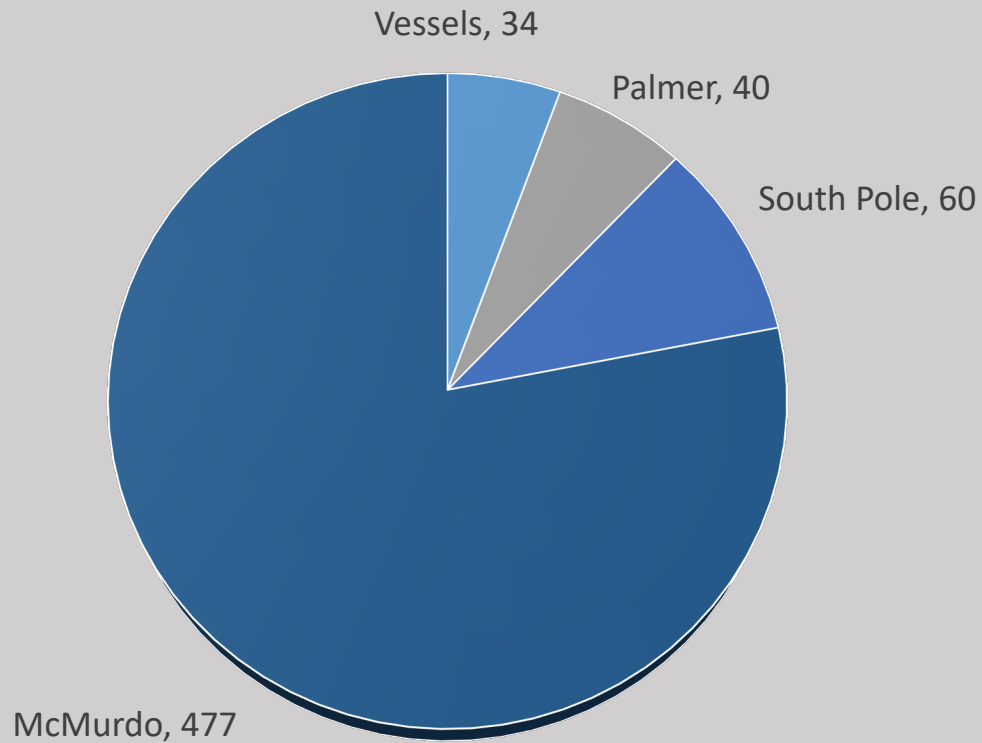






# Deploying Participants

## 2021 USAP Deployers by Station







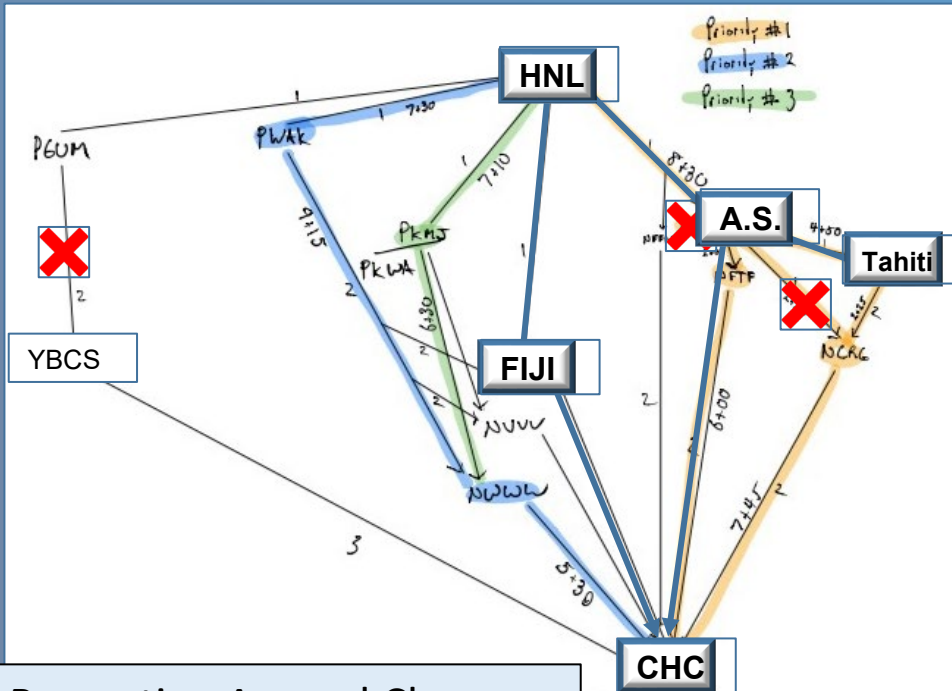
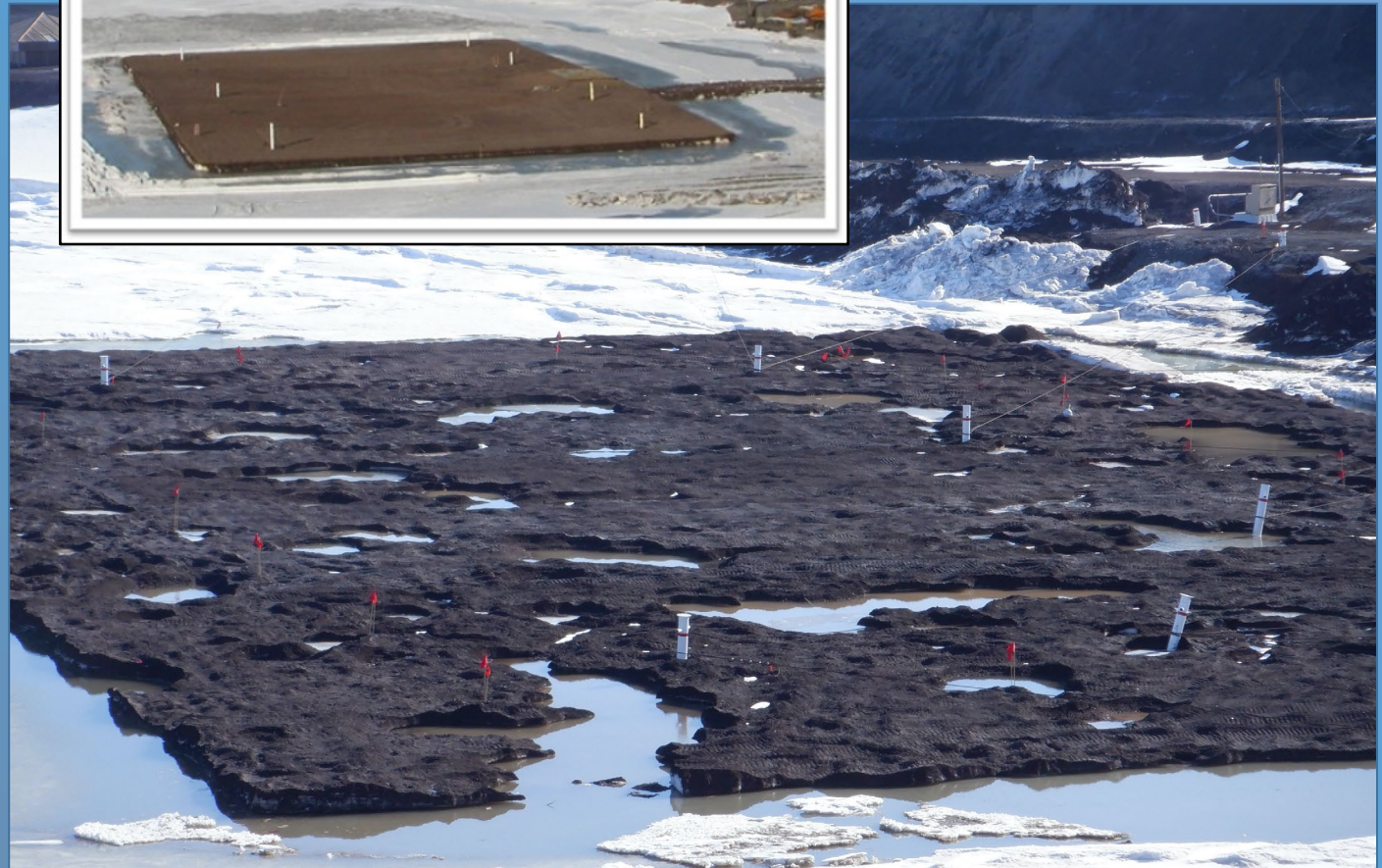
# Overcoming Challenges



Testing and Clinic Preparations



A typical ice pier covered in fines (inset), and this year's pier with significant melt ponds.



Re-routing Around Closures





# Keeping the Stations Operating







# Supporting Science

OPP-1640481 Rotella: The consequences of maternal effects and environmental conditions on offspring success in an Antarctic predator



Small student-led science team supported



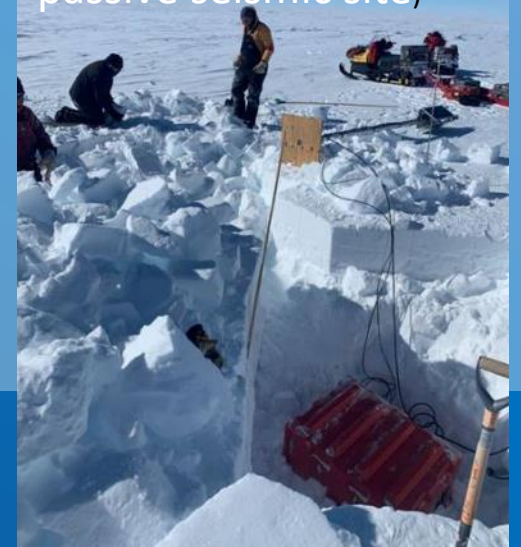
OPP-1745074 Wilson: POLENET and OPP-1739003 Tulaczyk-Christoffersen: TIME



Excavation and servicing of Lower Thwaites Glacier POLENET site before (left) and after (right) service: ASC Support (G-079-M)



Servicing of the TIME passive seismic site)





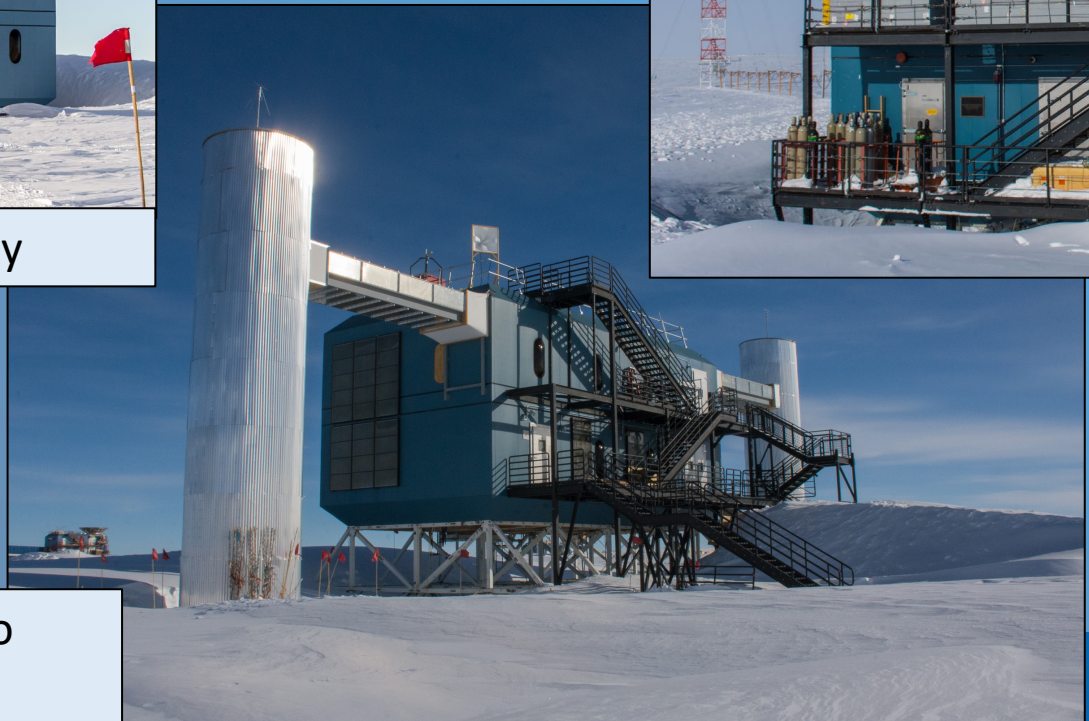


# Supporting Science



South Pole Telescope and BICEP Array

Atmospheric Research Observatory



IceCube Neutrino Observatory

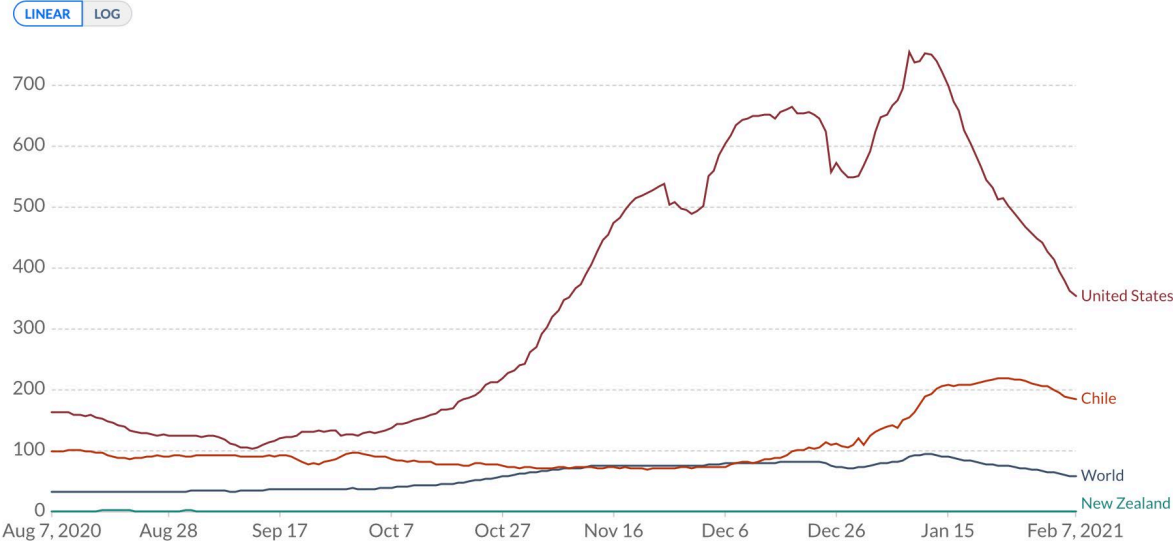


# Planning Next Season

## Daily new confirmed COVID-19 cases per million people

Shown is the rolling 7-day average. The number of confirmed cases is lower than the number of actual cases; the main reason for that is limited testing.

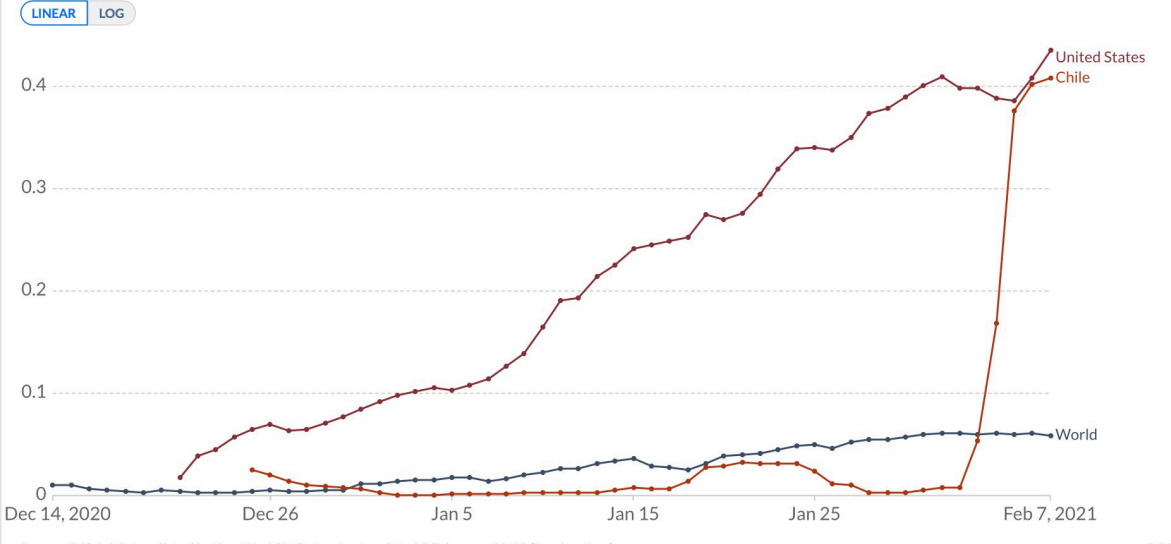
Our World in Data



## Daily new COVID-19 vaccination doses administered per 100 people

Shown is the rolling 7-day average. This is counted as a single dose, and may not equal the total number of people vaccinated, depending on the specific dose regime (e.g. people receive multiple doses).

Our World in Data



## COVID-19 in Chile

### New Travel Requirements

All air passengers coming to the United States, including U.S. citizens, are required to have a negative COVID-19 test result or documentation of recovery from COVID-19 before they board a flight to the United States. See the [Frequently Asked Questions](#) for more information.

Level 4: Very High Level of COVID-19 in Chile

The screenshot shows a news article from CNN World. The headline is "New Zealand's borders may stay shut for most of the year, PM Ardern says" by Reuters, updated on January 26, 2021. The navigation bar includes categories like Africa, Americas, Asia, Australia, China, Europe, India, Middle East, and United Kingdom. There is also a "LIVE TV" button and a search icon.



# Communicating

The image is a composite of two screenshots. The left screenshot shows a Zoom meeting interface. At the top, it says 'Participants (99)' with 'Panelists (22)' and 'Attendees (77)'. A list of names is visible, including Wilson Sauthoff (Host, me), Alexandra Isern, Katherine Otts, Robert Monnity, Angela Turner, Beverly Walker, Daniel King, Francisco Moore, Jennifer Burns, and Joe Kittle. Below the list are controls for 'Mute All', 'Unmute All', and 'More'. A chat window at the bottom shows messages from Robert Monnity to all panelists, including a thank you to Kelly Falkner and a notice about an AV Specialist.

The right screenshot shows the NSF website. The header features the NSF logo and the tagline 'WHERE DISCOVERIES BEGIN'. A navigation menu includes 'Research Areas', 'Funding', 'Awards', 'Document Library', 'News', and 'About NSF'. The main content area displays a 'Dear Colleague Letter' titled 'Supporting Data and Sample Reuse in Polar Research', dated January 27, 2021. The letter text discusses the Office of Polar Programs (OPP) encouraging proposals that leverage existing data and physical samples, and mentions the COVID-19 pandemic's impact on polar research. It also references the Arctic Research Opportunities, Antarctic Research solicitations, and CARE Principles for Indigenous Data Governance.





# Questions

Monitoring and Flagging of SuperDARN antennae



Excavation of the ARIANNA experiment for retrograde



Deployment of NOAA Antarctic Marine Living Resources (AMLR) Program Mooring



WAIS Camp fuel Bladder Raising

