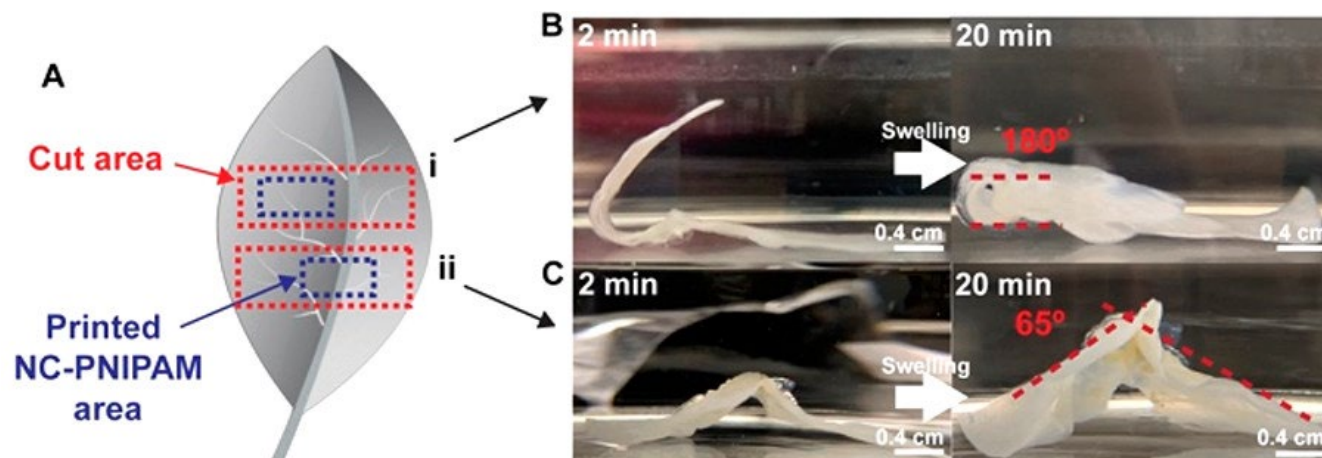
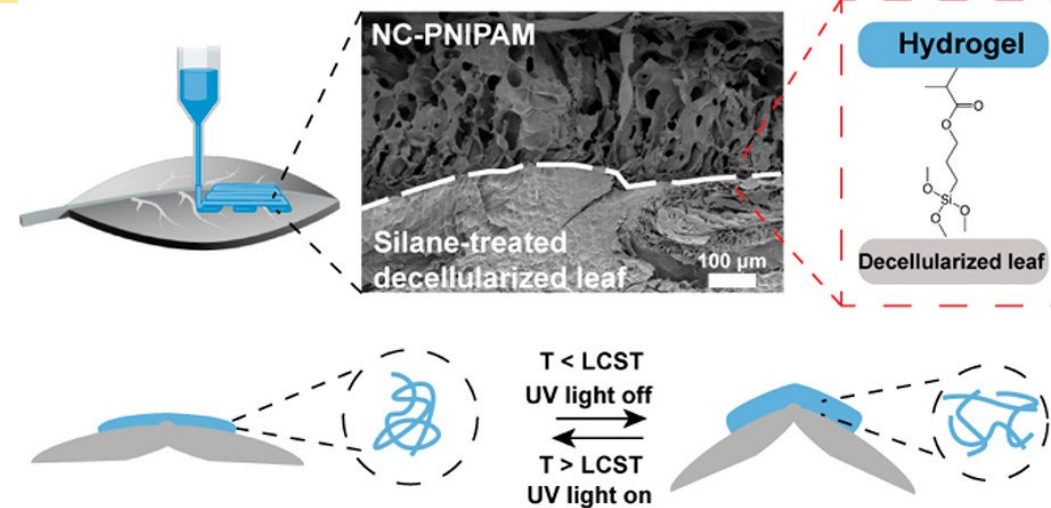


Michael J. Sailor, University of California-San Diego
 Jiayu Zhao, Yvonne Ma, Nicole Steinmetz, Jinhye Bae, UC San Diego

- Plant/polymer composite materials have been fabricated
- These composite materials are stimuli responsive and can undergo shape-shifting behavior in response to temperature or light
- Agriculture is essential to life, yet very few examples of ELMs involving plants have been achieved
- This example supports one thrust of IRG 2: Shape shifting Engineered Living Materials



ACS Macro Lett. 2022, 11, 8, 961–966.