

International collaboration in the Antarctic for global science

Dr. Karl Erb

Director

Office of Polar Programs

National Science Foundation (USA)

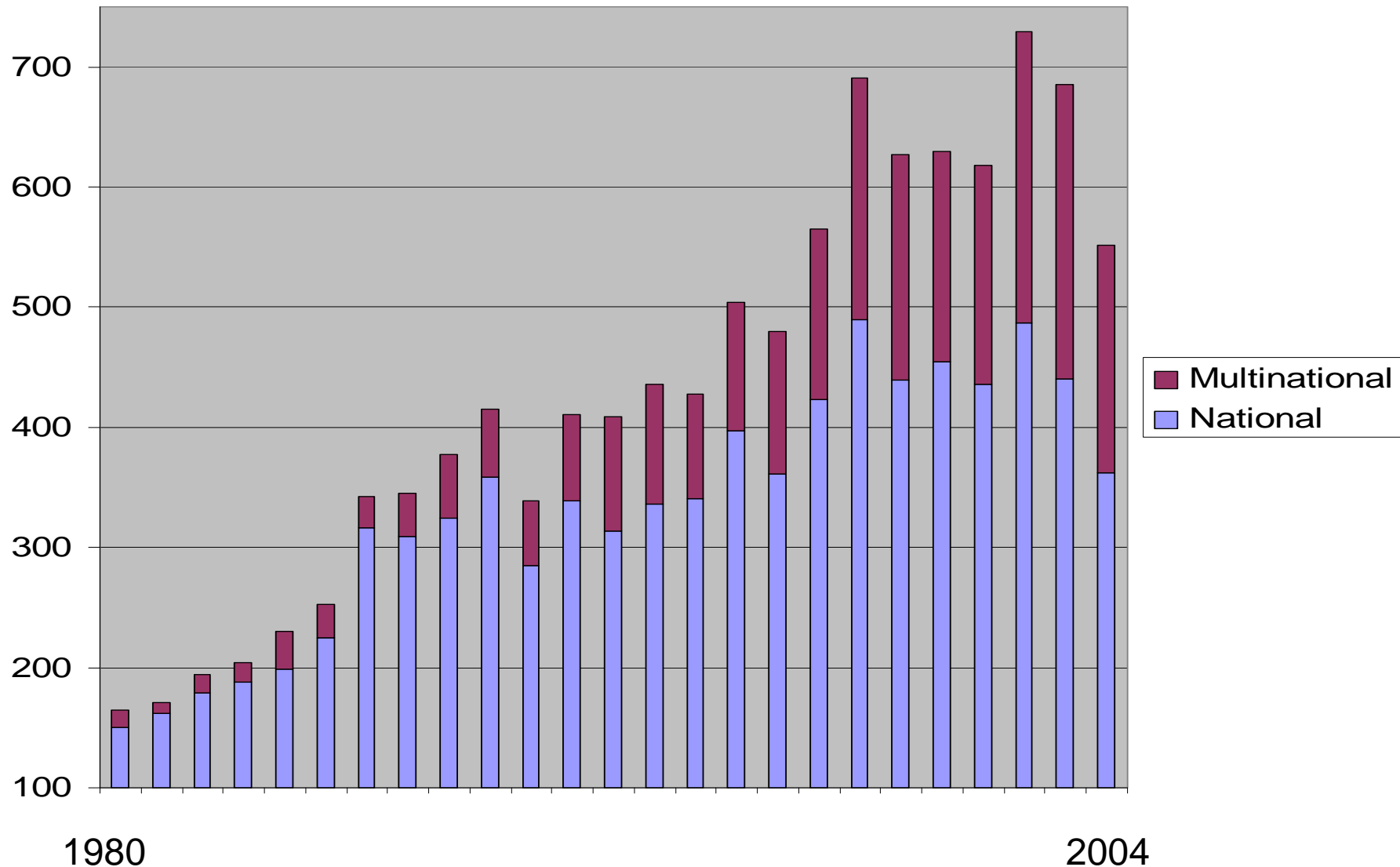
Russian/U.S. Weddell Sea expeditions

1981: Soviet icebreaker; 13 USA and 13 USSR scientists

1992: Russian and U.S. icebreakers; camp on sea ice; 17 USA and 15 Russian scientists



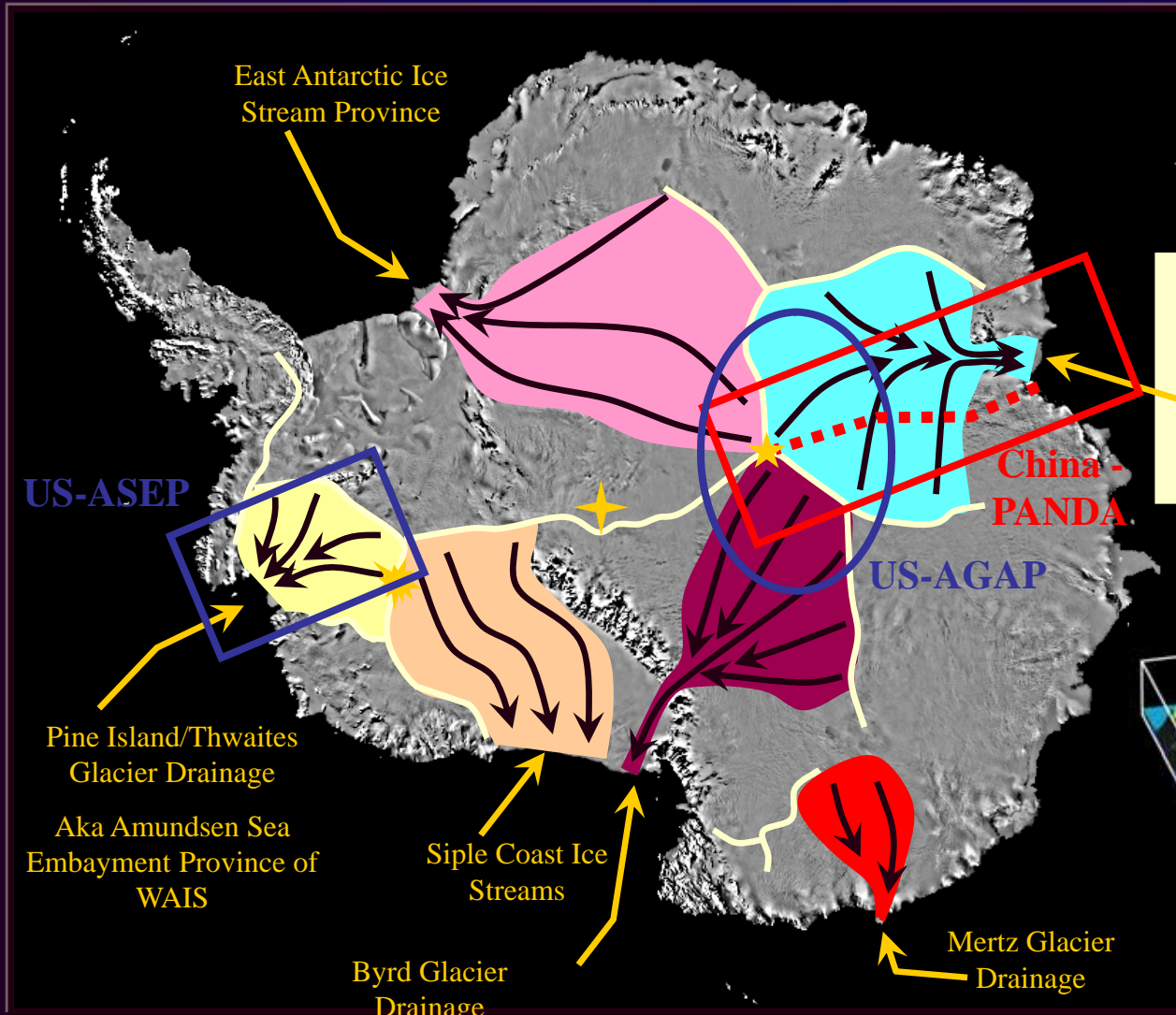
Multinational Antarctic research papers, 1980-2004



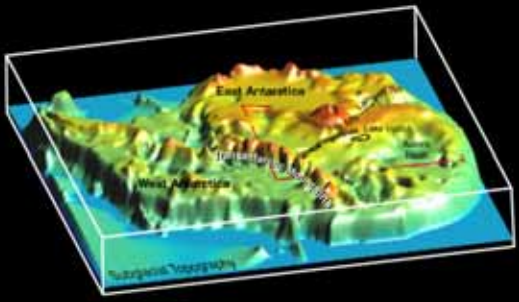
--after Dastidar and Ramachandran, 2008



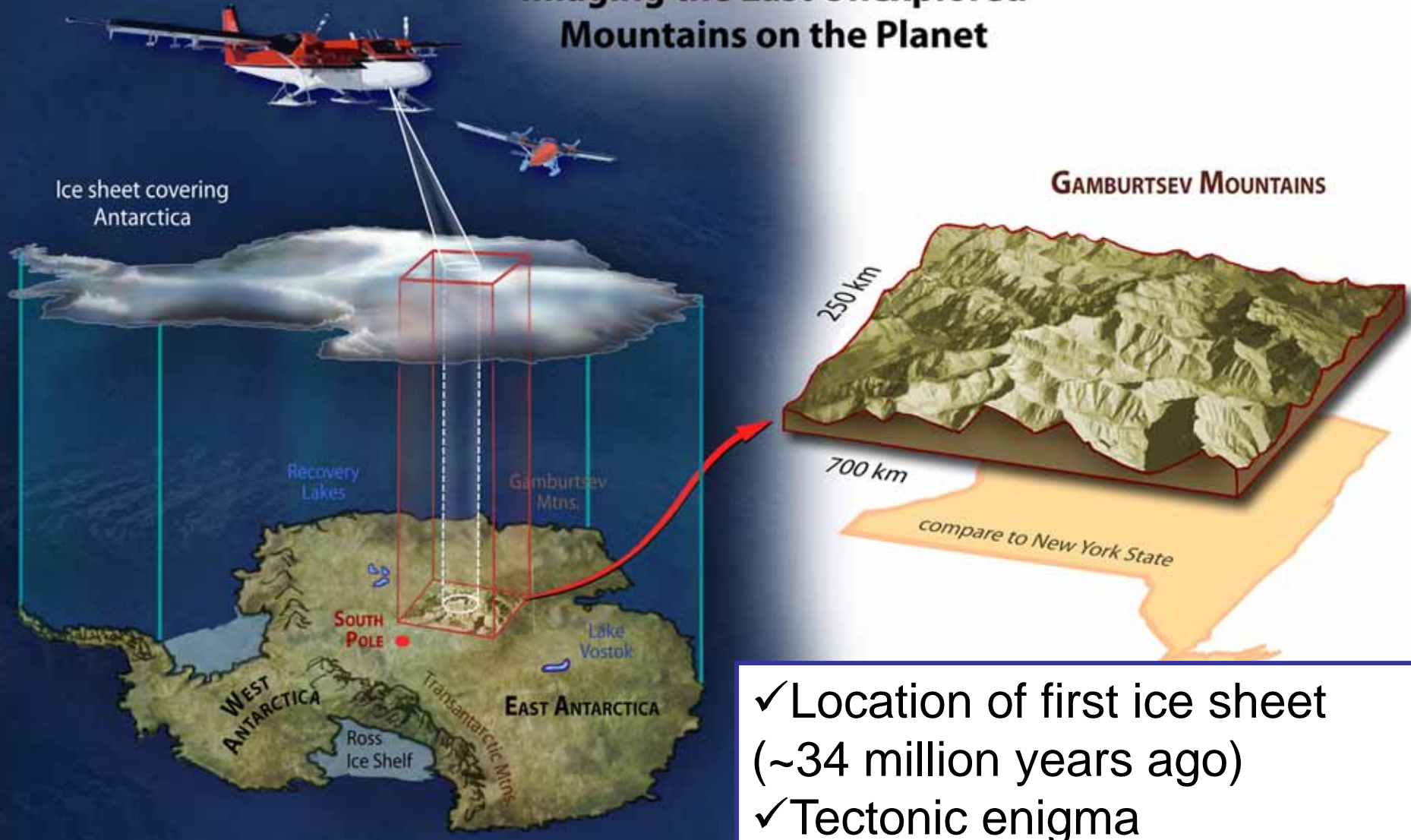
Antarctic Ice Sheet Drainage



Lambert Glacier/Amery Ice Shelf Drainage

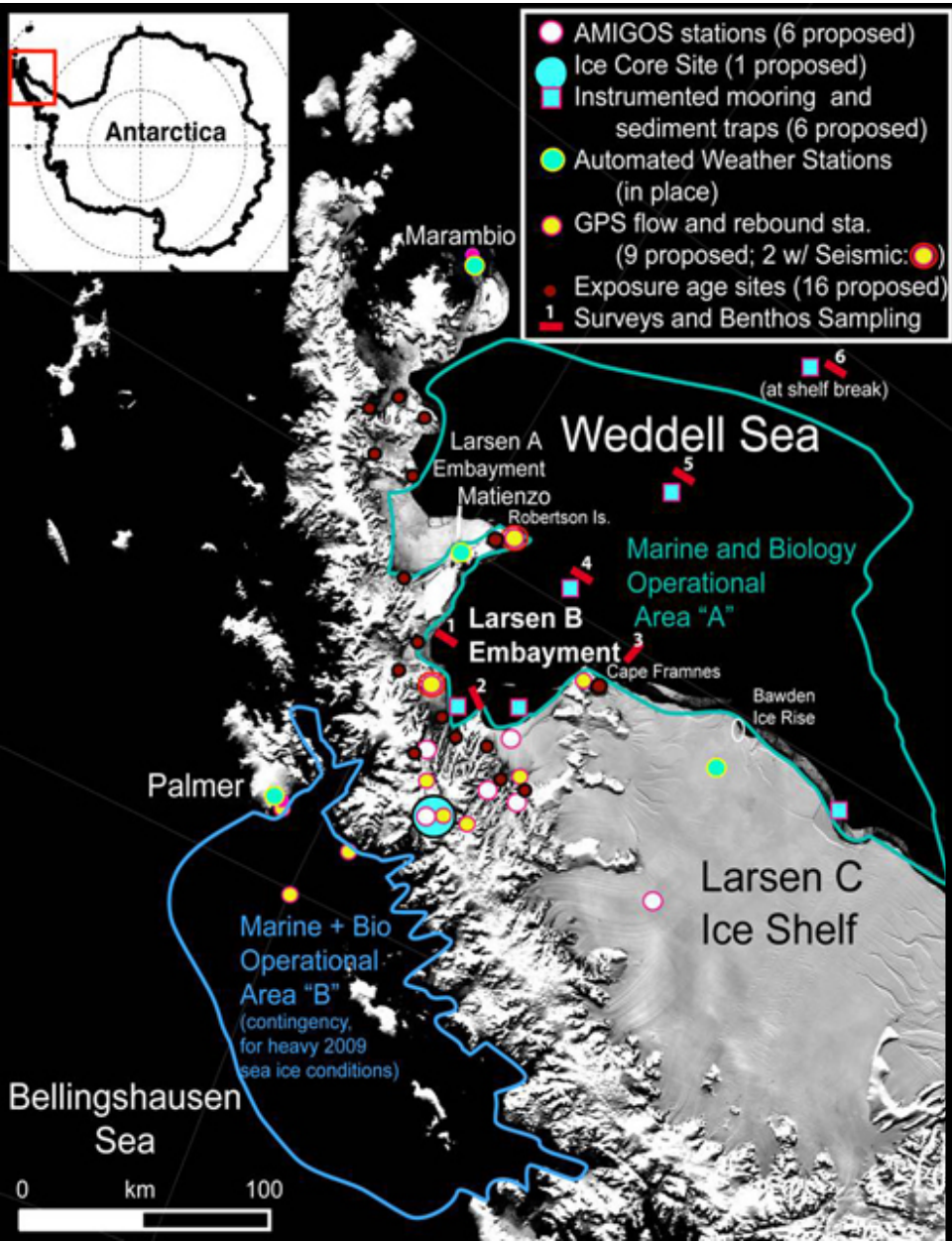


Imaging the Last Unexplored Mountains on the Planet



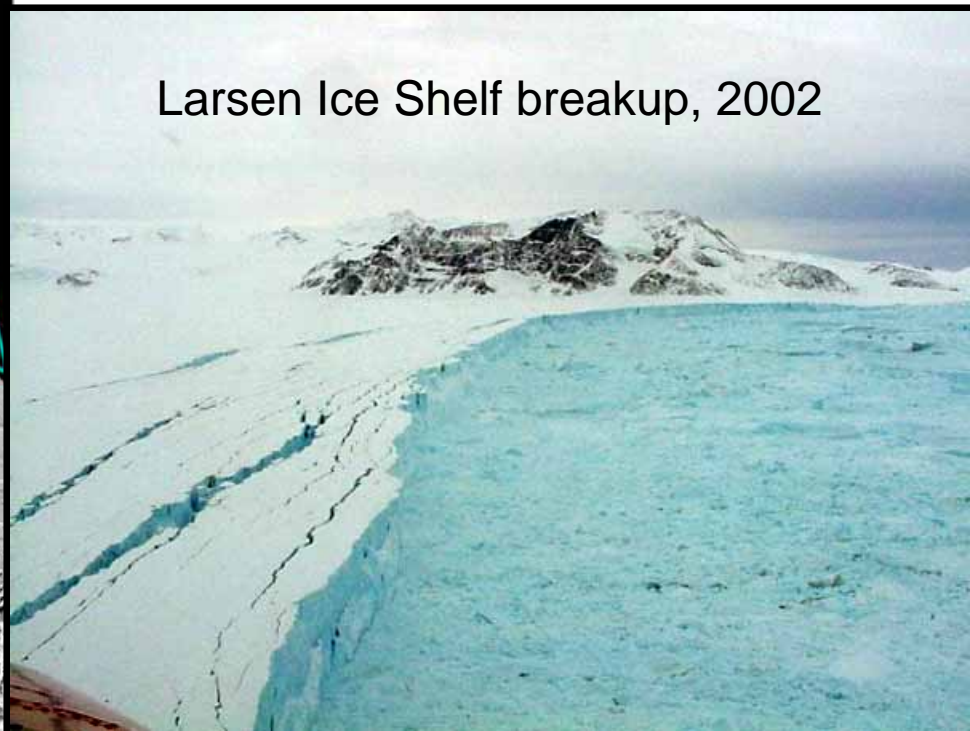
- ✓ Location of first ice sheet (~34 million years ago)
- ✓ Tectonic enigma
- ✓ Potentially very old ice
- ✓ USA, UK, Russia, Germany, China, Australia

Larsen Ice Shelf System, Antarctica (LARISSA) project

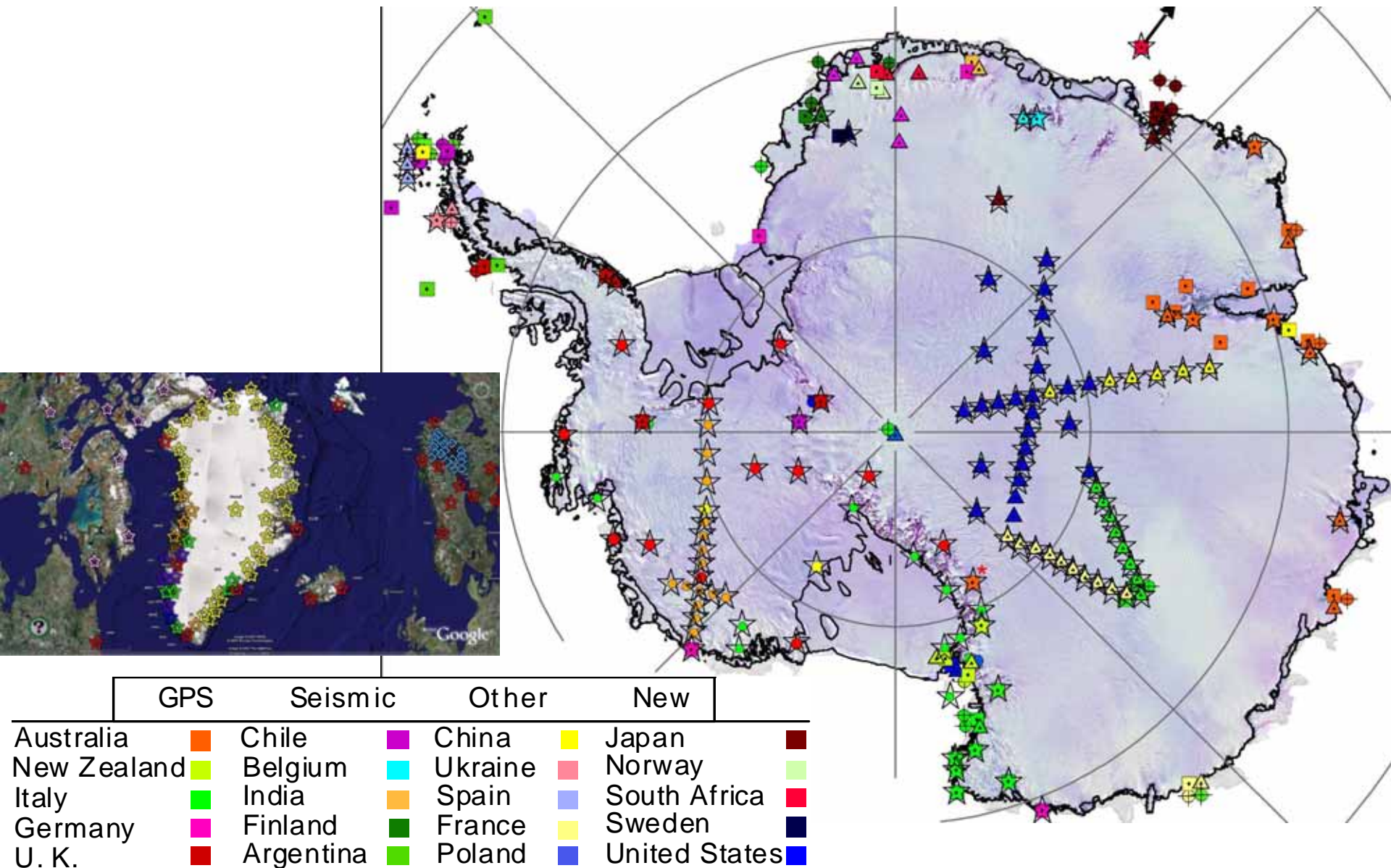


- ✓ Argentina
- ✓ Belgium
- ✓ Korea
- ✓ Ukraine
- ✓ United States

Larsen Ice Shelf breakup, 2002



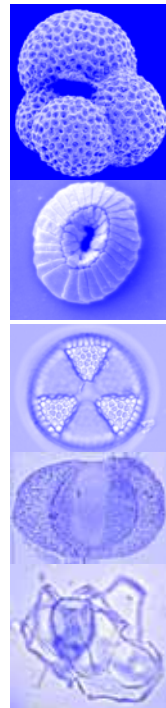
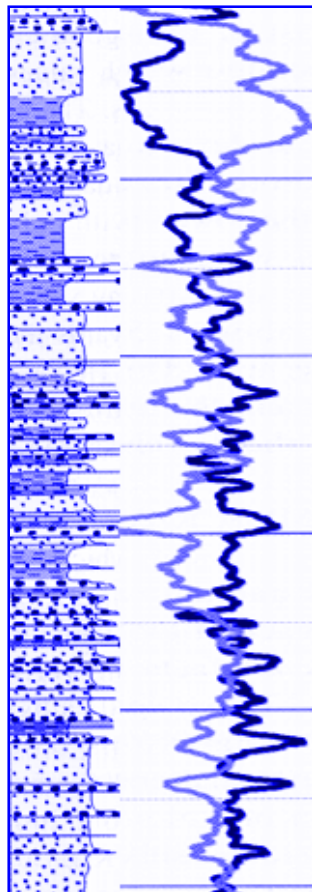
PoleNet Greenland and Antarctica



ITASE: International Trans-Antarctic Scientific Expedition



Antarctic Continental Margin Stratigraphic Drilling



Germany
Italy
NZ
UK
USA



Concordiasi science payload, McMurdo

France
-USA
study
of
climate





Concordia: Italian and French station at Dome C, East Antarctica

Australian Airbus A319 on sea ice runway, McMurdo, Antarctica



N.Z. Air Force C-130 on ice runway, McMurdo (wheels only)



LC-130 (ski-equipped)

Swedish icebreaker *Oden* in the Ross Sea, Antarctica





National flags of the original Antarctic Treaty signatories

Amundsen-Scott South Pole Station, U.S. Antarctic Program