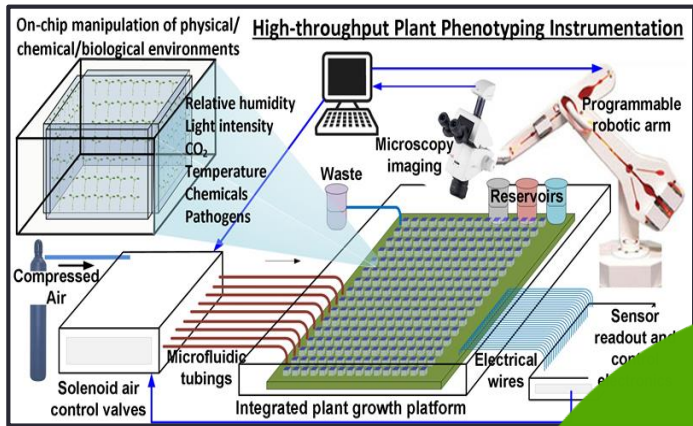


Division of Biological Infrastructure

- Bio-AC meeting, April 2016
 - Presenter: Dr. Jennifer W. Weller, ABI Program Officer

“Our mission is to support current activities by Biologists funded across the Directorate, and anticipate what their needs will be 5 years from now.”

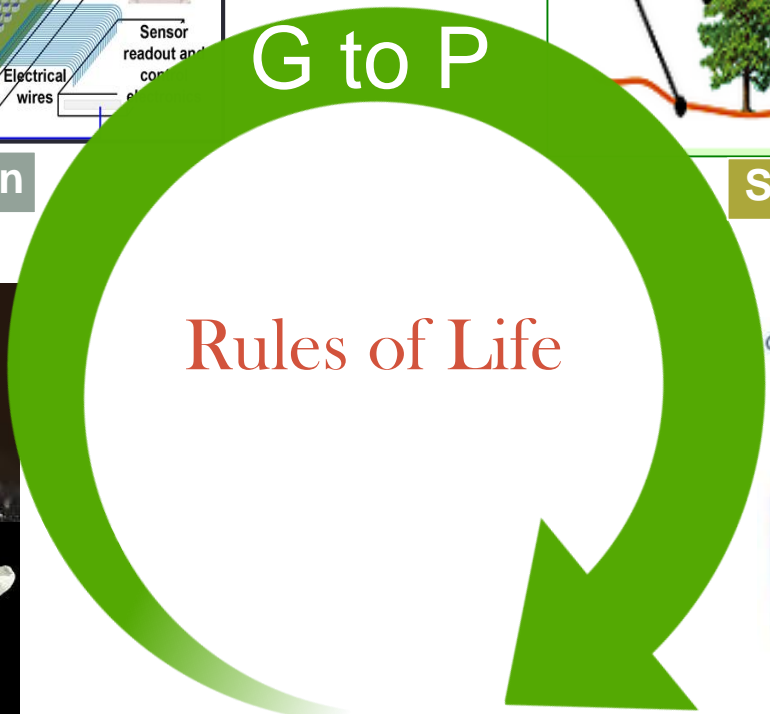
“Progress in science depends on new techniques, new discoveries and new ideas, probably in that order” Sydney Brenner



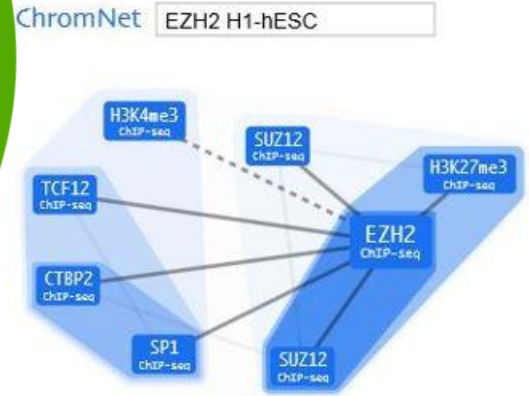
Instrumentation



Shared Data Platforms



Living Stocks



Modeling

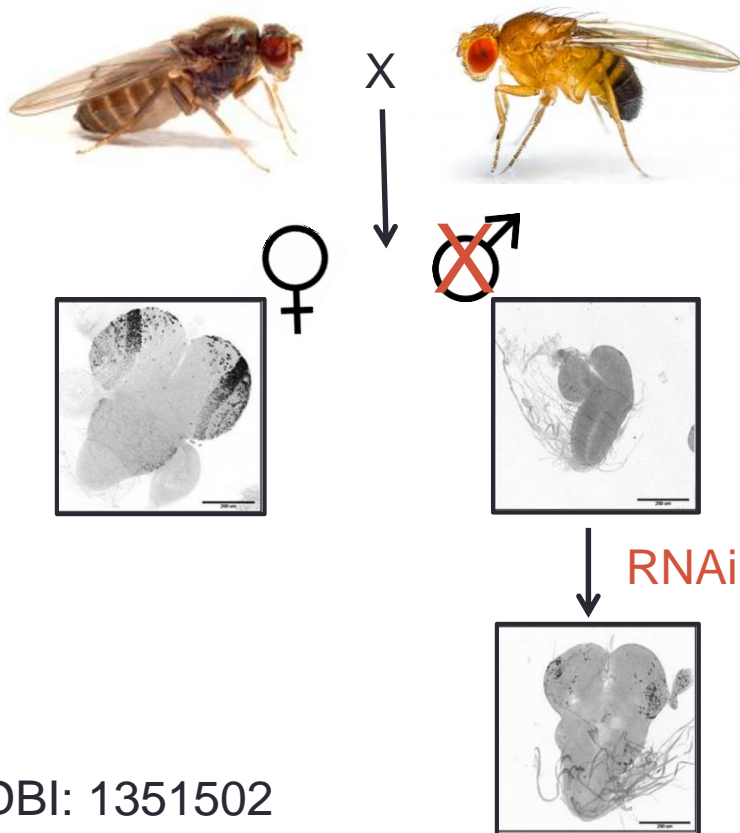
Galaxy **DRYAD**

Phenotype RCN

Open Science Infrastructure

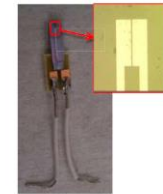
Infrastructure Transforming Basic Research

Interspecies sex-specific lethality



DBI: 1351502

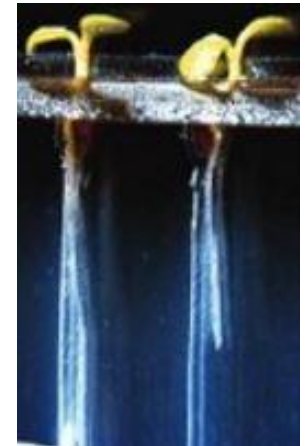
Bio-sized sensors



NanAphid
carbohydrate sensor

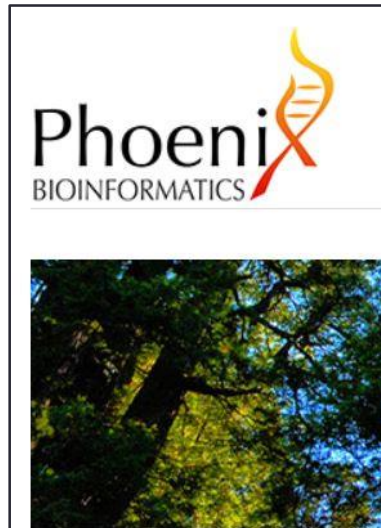


PlantChip –
3D structure images



DBI: 1455544 and 1353819

Sustaining Infrastructure - the Future



- Open Data/Open Science
 - 468 journal partners
 - 44,000 authors
 - 39,000 data files
 - 1.28 million downloads
- Funding: Depositor fee
- Community Databases*
 - TAIR (plant biology): 10 unique visitors per day, 3 page-views each
 - BioCyc (regulatory and metabolic networks): 1060 unique visitors/day, 5 page-views each.
- Funding: Subscription fee through Phoenix

*From <http://tair.org.hypestat.com/>
and <http://biocyc.org.hypestat.com/>