

Early Career Investigator Questions*

How long does it take to obtain a tenure-track faculty position after the Ph.D.?

How long and how many post-docs are typical?

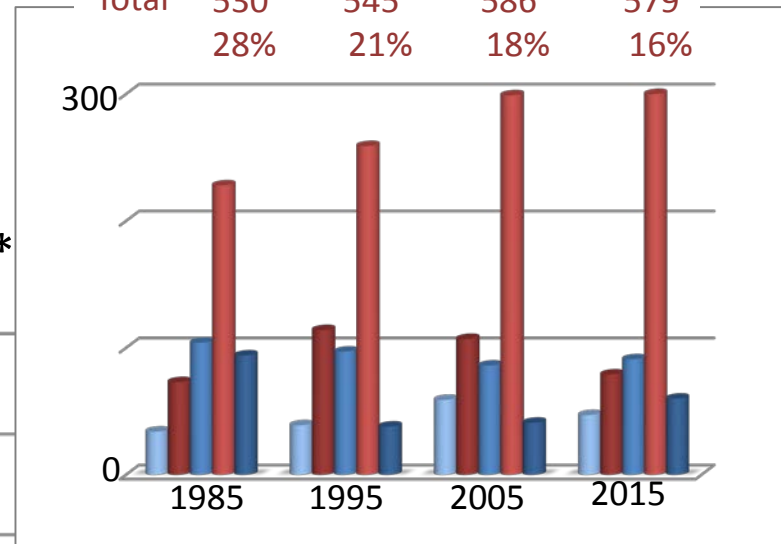
How (relatively) difficult is it to get the first award?
What are the challenges to starting a career?

* with answers resolved at the level of MPS fields

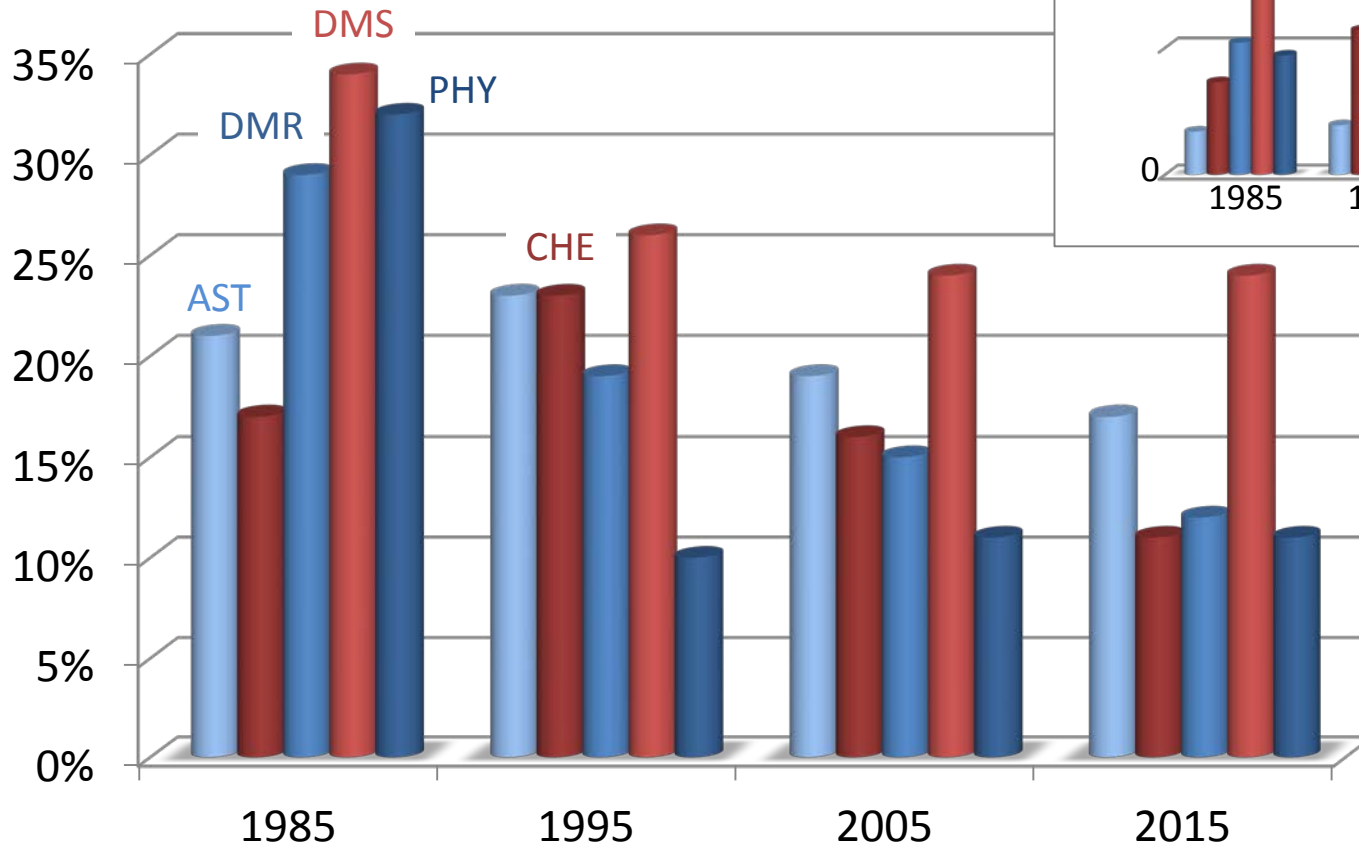


Number of "Young" PI and Co-PI

Total	530	545	586	579
	28%	21%	18%	16%

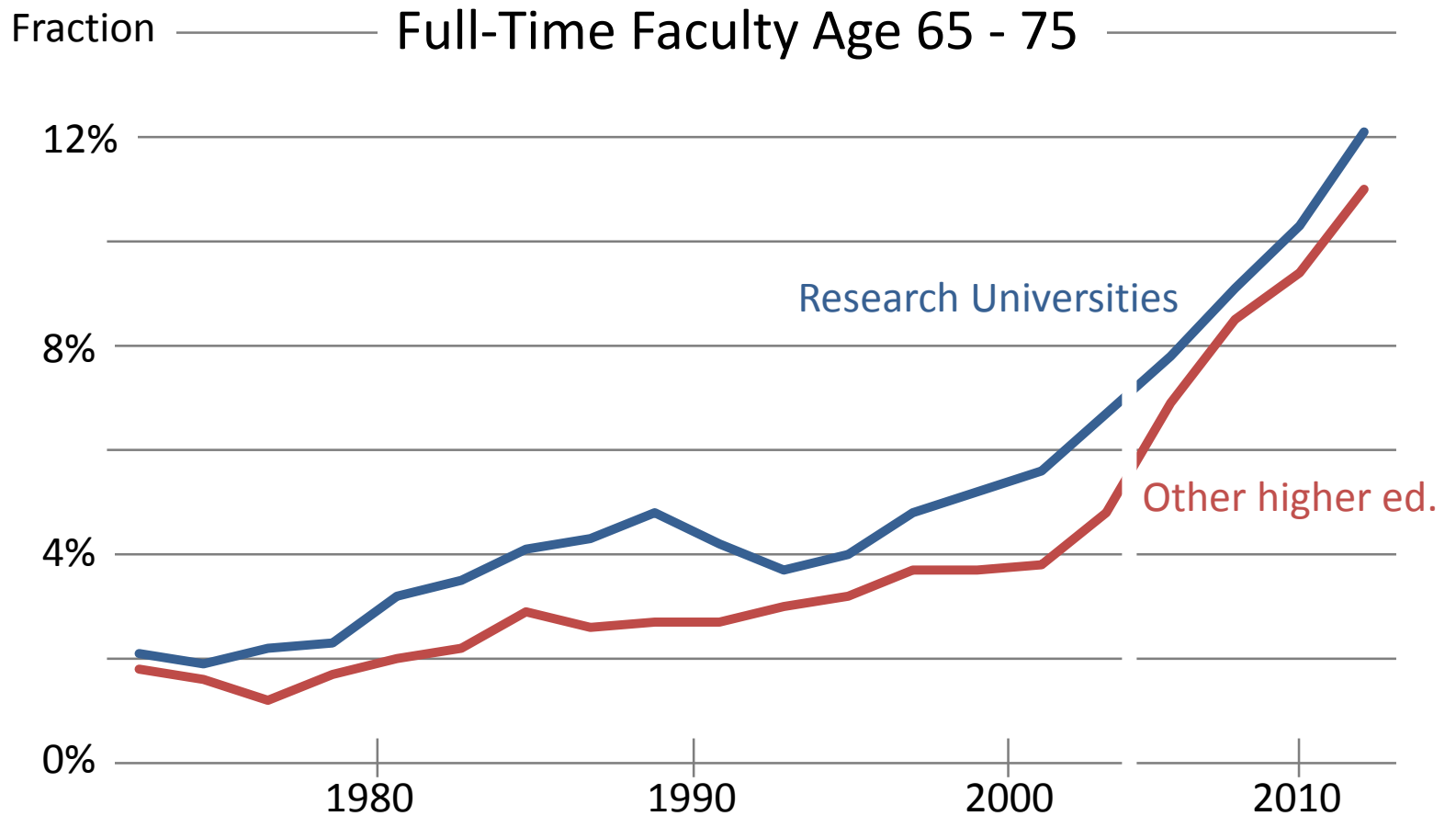


Fraction of "Young" PI and Co-PI*



*within 7 years of Ph.D.





Source: NSCES Science and Engineering Indicators 2016



Early Career Investigator Questions*

How long does it take to obtain a tenure-track faculty position after the Ph.D.?

How long and how many post-docs are typical?

How (relatively) difficult is it to get the first award?
What are the challenges to starting a career?

* with answers resolved at the level of MPS fields

